

Black Carpenter Ant



Camponotus pennsylvanicus

Foraging

Characteristics:

Large to very large ant, similar to Florida carpenter ant, but black and covered with long, yellowish or white hairs. May be seen



Most Common Complaints: Foragers in house or in outdoor appliances. Alates in house. Bait trails at night or find and spray nest.

Flight Season: Spring and summer.

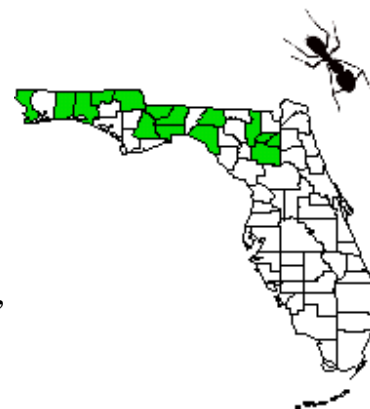
nest. Nest in dead or living trees, rotting logs and stumps. May nest in damaged or hollow wood of homes, occasionally in chests or trunks stored in attics or basements. This species can damage sound structural lumber.

Diet: Living and dead insects. Tend sap-sucking insects collecting [honeydew](#). Feed at [extrafloral](#) and [floral nectaries](#). Forage for sweets and proteins in homes.

Description: 6-13mm (1/4–1/2 in) long. No sting. End of [abdomen](#) with circular ring of hair. Twelve-segmented [antenna](#) without [club](#). Black ant. [Gaster](#) densely covered with long pale yellow or white hairs. [Subfamily Formicinae](#).

Distribution:

Alachua,
Bradford,
Columbia,
Escambia,
Gadsden,
Holmes, Jackson,
Leon, Liberty,
Madison,
Okaloosa,
Taylor, Union,
and Wakulla
Counties.



Origin: Native.



|